

# RIO – REYHER INTERNET ORDER

Online purchasing in the webshop



## Online purchasing in the webshop RIO – REYHER Internet Order

The webshop RIO – REYHER Internet Order provides round-the-clock access to each of over 80,000 items in the REYHER catalogue. This tool makes ordering easier, a user-friendly interface speeds up the process, reducing costs in the procurement process. Using previously stored data helps to avoid ordering errors.

The RIO webshop with its intuitive, clear structured interface is user-friendly down to the last detail. After a search, actions can be steered above and below the hit list using the multifunction menu.

On the RIO Internet page in the menu under 'My Account' you can see the name of your personal REYHER contact. Here you can also change your user details.

As an alternative to direct ordering in the webshop, RIO can be integrated into procurement solutions using an Open Catalog Interface, OCI.

### ■ Webshop RIO is extremely convenient with versatile and flexible functions

#### Search options

Special characteristics, free text search or using goods group structures – with various search parameters the item you are looking for is quickly and easily found.

#### Several shopping carts and favourites lists

Items chosen can be put into different shopping carts, increasing ordering flexibility. Items purchased often, from parts and construction lists, can be added to different favourites lists and stored in the webshop. All information necessary for planning is immediately available.

#### Price and availability display

Within seconds of opening the details for an item or shopping cart the current availability and prices are displayed. If necessary the amount to be ordered can be changed and availability updated.

#### Ordering process

All desired items are added to the shopping cart. After confirming the delivery address the order is transmitted to REYHER using a secure connection. Confirmation can be sent by email on request.

#### Additional item details

Click the item number or the magnifying glass icon to see the item details. The information is listed in subject areas and also includes, alongside the commercial data, key technical details, as well as references to alternative and related items.

#### Order overview

All orders placed are clearly shown. Additionally, all orders can be searched using various criteria, e.g. time or purchaser. For structured ordering, each customer can use the approval procedure available in the webshop.

### ■ Are you interested in efficient order processing using the webshop?

Then you are only three steps away from online ordering:

- Step 1.** Simply register under [www.reyher.de](http://www.reyher.de) to use the webshop.
- Step 2.** REYHER will send your personal access details by regular post.
- Step 3.** After entering your access details, you are ready to order on [www.rio.reyher.de](http://www.rio.reyher.de).

Welcome!



## Easy barcode-supported ordering with RIO | SCAN

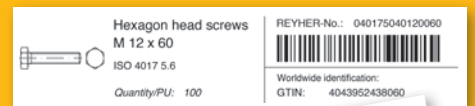
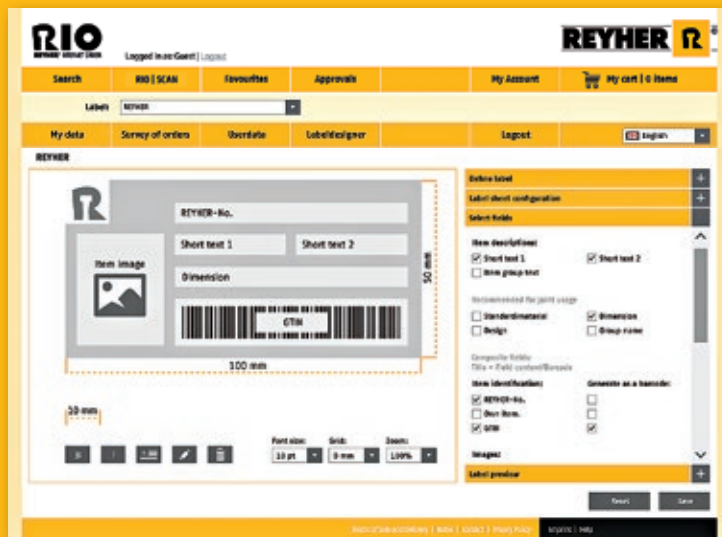
REYHER can make ordering in the webshop RIO – REYHER Internet Order even easier with RIO|SCAN. Our customer chooses an item from the webshop that must be ordered regularly. Using the 'print barcodes' button, a PDF document is created that can be printed on a standard A4 printer and then used for shelf labelling. There is also an option to print individual labels using a label printer. Ordering the item is then easily done when required using a handheld scanner. Our customer scans the barcode and transfers the data from the scanner into the webshop. The barcodes are recognised and the items are placed in the shopping cart.



## Additional label designer tool

The flexible and intuitive-to-use 'label designer' provides an alternative to the labels provided in the webshop. This additional tool makes designing individual labels possible. With the single or label sheet option, it is possible to freely define and position the boxes, giving greater design freedom. The boxes can include texts of items

and product illustrations that are already stored in the system. Free text can also be used on the labels. The label information you create can be stored in your customer account and be used by RIO |SCAN for printing labels.

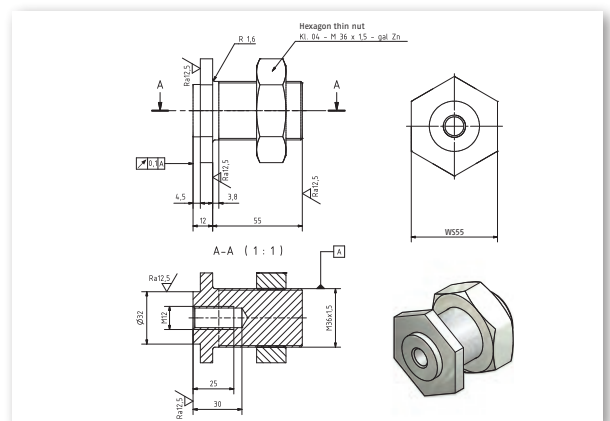


Examples for label design

Mask for label design

## CAD model library

After one-time activation the function for the RIO webshop is available for our customers to access 2D and 3D models of over 73,000 fasteners. The models can be used in every popular CAD software available. After determining items and data format REYHER sends the models to the email address stored previously.





+49 40 85363-0



ebusiness@reyher.de



www.reyher.de

**F. REYHER Nchfg. GmbH & Co. KG**

**Haferweg 1**

**22769 Hamburg**

**Germany**



### ■ RIO – REYHER Internet Order

- ✓ Easy, fast order processing reduces process costs
- ✓ User-friendly intuitive interface
- ✓ Easier item search with various search options
- ✓ Several shopping carts and your own favourites lists
- ✓ Price and availability display
- ✓ Errors minimised using customer material numbers already stored
- ✓ Key technical data and references available for items chosen
- ✓ Ordering overview ensures transparency
- ✓ Barcode-supported ordering with the add-on RIO|SCAN
- ✓ Label designer, an extra tool for individual design
- ✓ CAD models call-up extension
- ✓ Webshop integration in E-procurement systems via OCI

