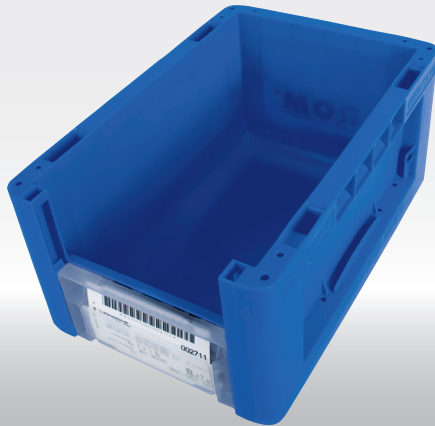


New Kanban containers ROM | LTB



The innovative Kanban container ROM | LTB has been developed in cooperation with SSI SCHAEFER and complements ROM – REYHER Order Management. Based on about 25 years of Kanban experience with various types of containers, an optimal well thought-through storage and carrier container has emerged, which offers many advantages.

The container is fitted with a sliding mechanism. One single action transforms it into a closed transport container securing the load. There is absolutely no need for organisation materials such as label holders, connecting or clip elements. This helps to protect environmental resources. A further benefit offers the transparent label holder on the sliding mechanism which protects the label from soiling, damage and loss. The sliding mechanism closes neatly in every position and does not negatively affect the container's appearance or operational safety. With an increased filling volume of up to 28% in comparison to conventional containers, using the ROM | LTB containers optimises stock taking up the same amount of space.

The handling of the container is optimised with the ergonomically designed grip with additional reinforcement, and the rounded interior bottom makes removing small items easier.

The design is oriented towards customer needs and has a subtle, pleasant colour.

Advantages

- ▶ **One action transforms the open visible storage container into a transport container**
- ▶ **Sliding mechanism for sloped or flat bottom shelving systems**
- ▶ **Does not need extra organisational materials**
- ▶ **Transparent holder protects label from soiling, damage or loss**
- ▶ **Special label holder for labels according to VDA standard**
- ▶ **Optimal use of shelving space**
- ▶ **Inventory optimisation, up to 28% increased filling volume**
- ▶ **Ideal load-handling with strengthened ribbed structure on the base**
- ▶ **Ergonomically designed grips**
- ▶ **Rounded interior bottom to make removing items easier**
- ▶ **Openings for automatic grabbers**
- ▶ **Proven quality by SSI SCHAEFER**

Are you interested in system deliveries using our carefully considered ROM | LTB containers?

Then please contact us!



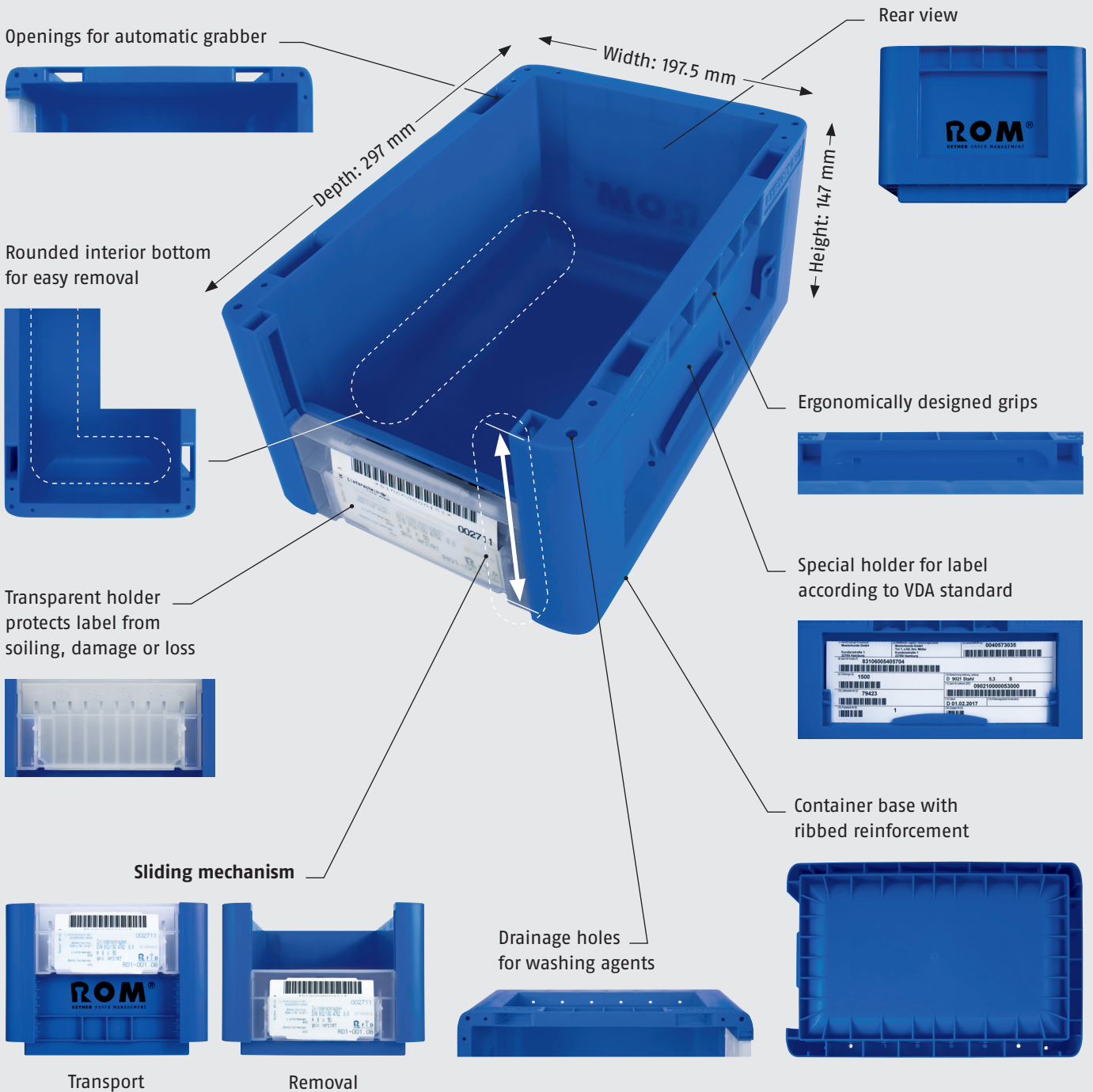
+49 40 85363-0



kanban@reyher.de

Kanban container ROM | LTB – colour: blue – max filling weight: 12

This new container is ideal for sloped shelving systems as well as flat bottom shelving systems and can be used wherever Kanban shelving systems are in use.



ROM – REYHER Order Management

REYHER has offered C-part management systems since 1993. Using ROM – REYHER Order Management provides our customers with the most reliable supply procedures. Combinable modules, RFID technology, barcode systems, flexible labelling and modern data interchange form an all-round carefree package for seamless materials supply. Adapted precisely and flexibly to meet individual customer needs.



F. REYHER Nchfg. GmbH & Co. KG
Haferweg 1 · 22769 Hamburg · Germany
Phone +49 40 85363-0
kanban@reyher.de
www.reyher.de

4-94.06.081.2017.000
D4/FEN/1/04/17