

REYHER



FASTENERS & FIXING TECHNOLOGY

SPECIALISED TRADE B2B

Spanplattenschrauben
Holzbauschrauben

REYHER

Edelstahl

REYHER



REYHER – an overview



REYHER > 130 YEARS EXPERIENCE

REYHER has been a reliable C-part supplier with customer-specific services for many years. F. REYHER Nchfg. GmbH & Co. KG was founded in 1887 trading iron goods, tools and ship's supplies, located directly in the Port in Hamburg. For over 70 years the family company has specialised in the trade of fasteners and fixing technology.

Today REYHER is one of Europe's leading distributors of fasteners and fixing technology, supplying both industry and trade customers worldwide. Our subsidiary F. REYHER Asia-Pacific Co., Ltd. in Shanghai takes care of the Asian market.

FACTS & FIGURES

> 850
employees

> 99 %
daily supply readiness

~ 400
million euros turnover

> 40,000 m²
total area

130,000
different items
in stock

Page CONTENT

2-3	REYHER – an overview
3	Business area Specialised Trade B2B
4-5	Automated logistics centre
6-7	Products for Specialised Trade B2B
8-10	Presentation of goods
11	Colour code system for product groups
12-15	Overview of the product range

REYHER has been operating in the Specialized Trade B2B / DIY sector since 2020. Since then, our branded display units for the presentation of our product range have been continuously improved and extended. We can now offer our customers over 2,600 items in our Specialized Trade B2B range, as well as having around 130,000 additional items in stock. These include a variety of metric screws, wood building and chipboard screws, nuts, steel and stainless steel washers, as well as fasteners for drywall construction, various wire products and wood connectors. In addition, all items have been packaged to optimise the product presentation – either with REYHER or with your own brand labelling. We are ready for everything.

You are interested?

Then contact with our expert Specialized Trade B2B team.

Email: fachhandel@reyher.de

We are looking forward to hearing from you!



SOCIAL COMMITMENT

We have been supporting the HSV foundation 'Hamburger Weg – Hamburg Way' since 2016. It's our aim to support children and young people in education, welfare and sport and to open up new perspectives for the upcoming generation.

In addition for many years, we have taken part regularly in benefit runs in aid of welfare projects. Also we support projects in Hamburg, e. g., international engineering competition 'Formula Students' by giving them fasteners for their designs.



COMMITMENT TO VOCATIONAL TRAINING



Many of our trainees remain with us after their (dual) education in the company – making a conscious decision to follow a career path at REYHER.



Automated logistics centre

STORAGE CAPACITY

100,000 + **180,000**
pallet places bin places

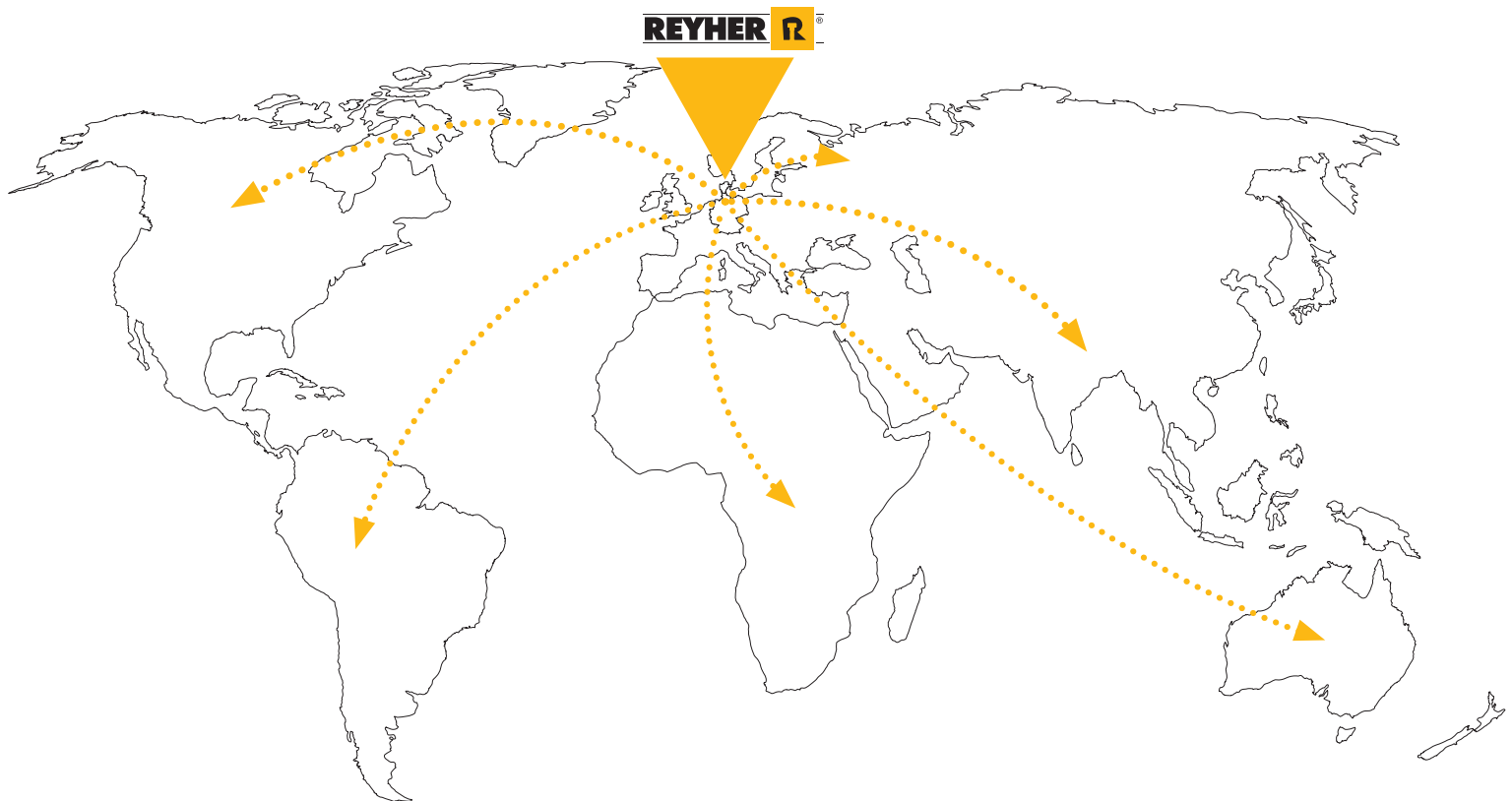
GOODS FLOW

> 600 tons per day
both in and out

ORDER POSITIONS

Ø 25,000 daily

DELIVERIES WORLDWIDE FROM HAMBURG





REYHER R

REYHER R

DAILY
SUPPLY READINESS
> 99%



Products for Specialised Trade B2B

■ Product range for Specialised Trade B2B

At REYHER we have more than 130,000 different articles in stock ready for immediate delivery.

We have built up a comprehensive range especially to cover Specialised Trade B2B / DIY needs. In the last few months this range has been extended with more than 1,000 articles. We can now offer you a choice of 2,600 articles for Specialised Trade B2B in total. The range will, of course be continually extended. It includes nuts, washers, accessories and metric screws, wood building screws and chipboard screws of steel and stainless steel, drywall screws and many more standard fasteners. What's more, we also have unusual but attractive products such as drywall system fastening and Tight Bits in our portfolio. Our Specialised Trade B2B portfolio is rounded off with a broad range of wire goods and a variety of GAH wood connectors have been a recent addition.

On pages 11–15 you will find a brief overview of our product range.

■ Cutting edge order processing

Apart from GTIN numbers and goods group descriptions, with our dedicated team of e-business specialists we are optimally positioned to provide you with the best electronic ordering processes. Particularly recommended for Specialised Trade B2B is using an EDI (Electronic Data Interchange) solution. Regular exchange of business data can then be executed efficiently and error-free.

Our webshop R10 – REYHER Internet Order is also available for searches, and as an online ordering alternative. Alongside the user-friendly search functions, it provides price and availability information and you can install your own article numbers and make parallel shopping carts possible.



■ REYHER Test Laboratory

What the eye cannot see, our test equipment sees. High quality awareness at REYHER is reflected in product quality.

Fasteners and fixing technology arriving at our Head Office in Hamburg are put through their paces in our

own test laboratory with state-of-the-art technology and equipment. This includes tests for tension, torque, preload force, spectral analyses, hardness, as well as salt spray tests.





■ Novel "Tight-Bits" series

The development of the new bit series facilitates optimal positive locking between bit and screw. This is achieved in particular by the wider, strengthened bit wings and the conical design. The new design allows the bit to sit firmly in the screw head – the name Tight-Bits says it all.

For the user working with Tight-Bits is easy and efficient: The grip achieved by Tight-Bits reduces the loss of screws while working. Especially when working above your head, which makes this a big advantage when needing to work with just one hand.



Tight-Bits are available in five different dimensions and packed in bags of ten making them easy to hang on a shelf strip.

■ Drywall system fastening exclusive at REYHER

This article is a combination of a flanged pan head screw in combination with a wall plug.

This fastener does not require pre-drilling or additional tools. This means that the screw can be screwed into the drywall in a single step within a few seconds.

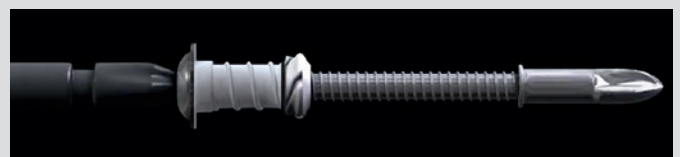
How this drywall system fastening functions can be seen in a video on our website.

Go to www.reyher.de/trockenbau.

REYHER have a drywall system fastening that is exclusively available in Germany and in many other European countries.



Direct to the video



■ Wood connectors by GAH

We have a variety of wood connectors from the quality manufacturer Gust. Alberts GmbH & Co. KG (short GAH) new in our Specialised Trade B2B product range recorded.





Shelving system for the presentation of goods

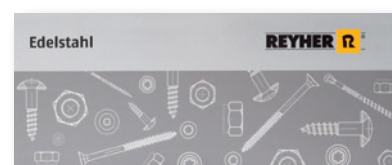
The first impression is important – this also applies to the presentation of goods.

Alongside quality, contemporary presentation is the be-all and end-all of successful sales. REYHER has developed a well-thought-through shelving system. Goods are clearly presented in an appealing design, in the Specialised Trade usual colour code system. End users should be well orientated and be able to find their goods quickly.

Our market customers profit from the attractive presentation of the goods and the sales space productivity index on which our concept is based. As well as a presentation for the REYHER goods, we also offer to help with the presentation of your own brands. With REYHER at your side, you have a partner in the market well-known for high product awareness and a supply of continuously good product quality; all of this with the reliably high supply capacity thanks to our automated logistics centre, coupled with a reliable dispatch system.

Topper

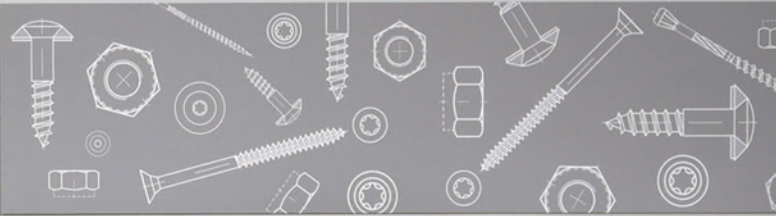
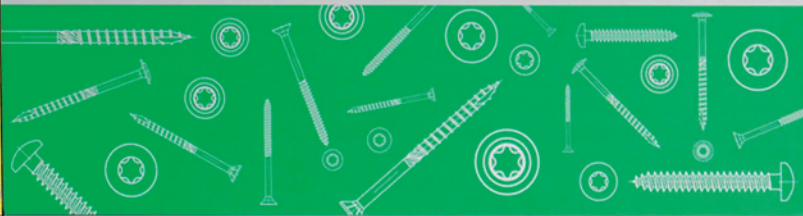
- Structure based on goods groups
- The following formats are available:
120 x 40 cm, 120 x 10 cm, 100 x 40 cm, 100 x 10 cm
- Adaptable for your own brands



Cardboard packaging

- Choice of several sizes
- Robust material
- Chute boxes with pouring lip for easy picking
- Adaptable for your own brands





Sample strips

- It is possible to mount all types of article
- 'Hands on' products prevent damage to packages
- Variable use



Labelling (shelving and packaging)

- Clearly organized
- Contents in line with guidelines
- With colour bars for goods group orientation
- Adaptable for your own brand label



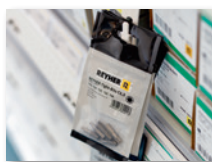
Mounting for threaded rods

- Integrated into the shelving system
- Clear product presentation
- Suitable for all sizes of threaded rods



Speed strips

- Integrated into the shelving system
- Easy to handle
- High visibility



PE bag

- Choice of several sizes
- Packaging for small parts
- Adaptable for your own brand label

Options for presenting the goods

With our alternatives to present your products optimally, we cover your needs. You need the goods in storage boxes for selling loose? No problem. You would like to run seasonal promotion campaigns? No problem.

■ Storage boxes to sell loose goods

We offer special storage boxes for selling loose goods. Made from robust environment-friendly cardboard they can be used flexibly.

Sophisticated down to the last detail: The cardboard is extendible, you can select the optimal length for each article, or even two related products in one storage box e.g. a screw with a suitable nut. In addition the shelving space can be used efficiently with this solution.

As well as the cardboard storage boxes we can also provide an alternative – a standard storage box. Our solutions for selling loose goods are of course available for your own brand labelling.



■ Sales display

For seasonal sales we offer extra shelving units. We would be pleased to support your needs with a point of sale display.



This is how it could look like in your market...



We support you with the REYHER brand or your own brand labelling.

Colour code system for product groups

The REYHER product range for the Specialised Trade B2B is organized into various product groups. For this we use the usual colour coding and label our articles in the same way.



Chipboard screws | Wood building screws

Page 12



Nuts | Washers | Accessories | Metric screws

Page 13



Drywall system fastening | Wood screws

Page 13



Wire products

Page 14

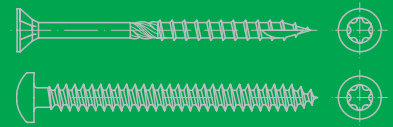


Stainless steel

Page 14

Extras

Page 15



Wood constructions pose special quality and safety challenges. REYHER is well-known in the sector for its high quality standards, wide-product range as well as expertise with respect to the special requirements and prerequisites.

Our portfolio includes chipboard screws (with CE markings in line with DIN EN 14592) and wood building screws (with CE markings in line with ETA-20/0947) as well as other fasteners and fixing technology essential for wood construction.

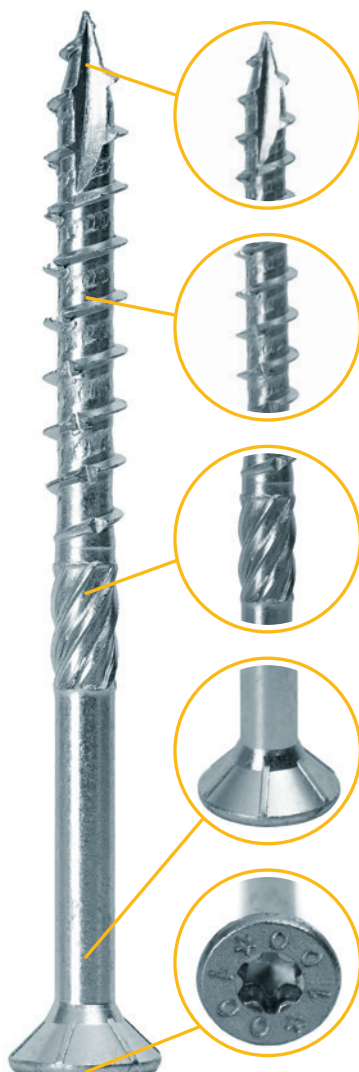
Available in the following dimensions:

Article	Dimensions
89091 Wood building screws, countersunk head	3.5 x 20 to 10.0 x 400 -T
89092 Wood building screws, flange head	6.0 x 40 to 10.0 x 450 -T
89096 Chipboard screws, pan head	3.5 x 20 to 5.0 x 80 -T

Article	Dimensions
89098 Chipboard screws, pan head	3.0 x 12 to 6.0 x 240 -T
89815 Window fram screws, countersunk head	7.5 x 92 to 7.5 x 212 -T
89816 Window frame screws, cheese head	7.5 x 92 to 7.5 x 212 -T

Advantages of wood building screws

Wood building screws with countersunk or flange head from the REYHER product range offer considerable advantages especially for assembly. For example, no pre-drilling is required. An effective wax coating also ensures a low bolting up torque.



Self drilling tip, threaded up to the point for easier starting and centering

Safe, clean threads, for high pull-out values

With shank milling cutter for low screw-in resistance

Notice: Sizes from 5 mm upwards are fitted with end mills.

Countersunk head with milling ribs for splinter-free insertion

Fast precise power transmission, countersunk or flange head with hexalobular drive, head stamp with information on length with 6/8/10 mm diameter



Dimensioning software for wood building

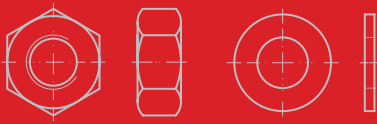
To use our free dimensioning software for your wood building project see www.reyher.de.

The three modules, general connectors, over-rafter insulation and façade mounting can be selected for your planning.

The dimensioning software calculates each project entry for all connections available in the module.

The fixing element selected, has the smallest diameter and shortest length, requiring the least fixing elements. This will favour the most economic result. The calculation is completed in real time.

Notice: The software is only available in German.



Nuts | Washers | Accessories | Metric screws

Our portfolio for Specialised Trade covers the most diverse zinc plated metric screws in the common standards. Along with numerous nuts, washers, threaded rods and for example spring lock washers, which can also be found in this section.

Available in the following dimensions:

Article	Dimensions
DIN 125 Plan washers	A 3.2 to A 21
DIN 127 Spring lock washers	A 3 to A 20
DIN 436 Square washers	9 to 22
DIN 440 Washers	R 5.5 to R 22
DIN 601 Hexagon head bolts with nut	M 5 x 16 to M 12 x 90
DIN 603 Cup head square neck bolts	M 5 x 25 to M 12 x 260
DIN 912 Hexagon socket head cap screws	M 3 x 6 to M 12 x 80
DIN 931 Hexagon head bolts	M 5 x 30 to M 12 x 160
DIN 933 Hexagon head screws	M 4 x 12 to M 12 x 50
DIN 934 Hexagon nuts	M 3 to M 20
DIN 965 Countersunk head screws	M 3 x 6 to M 6 x 50 -H M 3 x 10 to M 6 x 60 -T
DIN 975 Threaded rods	M 3 to M 20

Article	Dimensions
DIN 985 Prevailing torque type hexagon nuts	M 3 to M 20
DIN 1587 Hexagon domed cap nuts	M 3 to M 20
DIN 7965 Pan head screws	M 4 x 8 to M 10 x 20
DIN 7985 Pan head screws	M 3 x 6 to M 6 x 60 -H M 3 x 10 to M 6 x 60 -T
DIN 9021 Washers	3.2 to 22
ISO 10642 Countersunk head screws	M 3 x 12 to M 12 x 80
88087 Hexagon couplings	M 5 x 20 to M 20 x 50
88088 Round couplings	M 6 x 20 x 10 to M 12 x 30 x 15
88104 Washers with large outside diameter	4.3 x 15 to 12.5 x 40
88215 Wing nuts	M 3 to M 12
89601 Bolt with nut	M 12 x 100 to M 12 x 300



Drywall system fastening | Wood screws

Drywall system fastening are ideal for use in connecting fibre, e.g. plasterboard in wood or metal constructions.

Available in the following dimensions:

Article	Dimensions
DIN 571 Hexagon head wood screws	6 x 20 to 12 x 300
DIN 7504 N / P / K Drilling screws	3.5 x 9.5 to 6.3 x 90
DIN 7981 Pan head tapping screws	3.5 x 9.5 to 6.3 x 50 -C-T
DIN 7983 Raised csk. head tapping screws	3.5 x 9.5 to 6.5 x 50 -C-H
88149 Hanger bolts	6 x 60 to 10 x 140
89150 Drywall screws coarse thread	3.9 x 25 to 5.5 x 38 -H
89150 taped Drywall screws coarse thread	3.9 x 25 to 3.9 x 45 -H
89151 Drywall screws fine pitch thread	3.6 x 25 to 4.8 x 90 -H
89151 taped Drywall screws fine pitch thread	3.9 x 25 to 3.9 x 45 -H
89152 Drywall screws drilling point	3.5 x 25 to 3.5 x 55 -H

Article	Dimensions
89153 Drywall screws plaster fiber plates	3.9 x 19 to 3.9 x 55
89155 Drywall screws perforated plates	3.5 x 30 -H
89800 Adjusting screws	6 x 60 to 6 x 145 -T
89801 Nail plug, countersunk head	5 x 30 to 8 x 120 -Z
89801 Nail plug, cheese head	6 x 35 to 6 x 60 -Z
89802 Ceiling nails	6 x 40 to 6 x 65
89803 Pan head framing screws	3.9 x 11 -H
89804 Frame screws set	M 8 x 25
89809 Drywall system fastening	5.4 x 55 -H
89812 diverse colours Hexagon self drilling screws	4.8 x 20 to 4.8 x 35



In the wire goods section you will find the most common steel wire-nails for general use as well as, for example, various lightweight panel nails, loop nails, masonry nails and spikes for nail-plates.

Available in the following dimensions:

Article	Dimensions
DIN 1144 Nails for light weight building slabs	A 3.1 x 50 to A 3.4 x 80
DIN 1151 countersunk head, Round plain head nails	1.6 x 30 to 7 x 210
DIN 1151 HDG, countersunk head, Round plain head nails	1.6 x 30 to 5.5 x 160
DIN 1152 Round nails with cold headed head	1.6 x 30 to 3.4 x 80
DIN 1159 Loop nails	1.6 x 16 to 3.1 x 31
DIN 1160 Wire nails with extra large head	B 2 x 20 to B 2.5 x 30

Article	Dimensions
89805 Masonry nails	2.7 x 40 to 4.5 x 80
89806 Concrete nails with washer head	3.5 x 35 to 3.5 x 70
89807 Spikes for nail-plates	4 x 40 to 4 x 60
89808 Nails for slate	2.8 x 25 to 2.8 x 35
89818 Double headed nails	3.1 x 65 to 3.4 x 80

Stainless steel



Due to their resistance to weathering, stainless steel fasteners are mainly used outdoors. In normal market practice non-rust stainless steels are also known as non-corrosive.

Available in the following dimensions:

Article	Dimensions
DIN 84 Cheese head screws	M 3 x 12 to M 6 x 60
DIN 125 Plain washers	A 3.2 to A 21
DIN 127 Spring lock washers	B 3 to B 20
DIN 440 Washers	R 5.5 to R 22
DIN 571 Hexagon head wood screws	6 x 30 to 12 x 160
DIN 603 Cup head square neck bolts	M 5 x 20 to M 12 x 120
DIN 912 Hexagon socket head cap screws	M 4 x 10 to M 8 x 80
DIN 931 Hexagon head bolts	M 6 x 30 to M 10 x 100
DIN 933 Hexagon head screws	M 5 x 20 to M 12 x 120
DIN 934 Hexagon nuts	M 3 to M 20
DIN 963 Countersunk head screws	M 3 x 12 to M 6 x 50
DIN 965 Countersunk head screws	M 3 x 12 to M 6 x 50 -T
DIN 975 Threaded rods	M 3 to M 20
DIN 985 Locking nuts	M 3 to M 20

Article	Dimensions
DIN 1587 Hexagon domed cap nuts	M 3 to M 20
DIN 7985 Pan head screws	M 3 x 10 to M 6 x 60
DIN 9021 Washers	3.2 to 22
ISO 10642 Countersunk head screws	M 4 x 10 to M 8 x 50
ISO 14585 Tapping screws	3.5 x 9.5 to 6.3 x 32 -C-T
88087 Hexagon couplings	M 5 x 20 to M 20 x 50
88096 diverse colours Chipboard screws, pan head	5.5 x 35/22 -T
88104 Washers with large outside diameter	4.3 x 20 to 12.5 x 30
88295 SPENGLER screws	4.5 x 25 to 4.5 x 65 -Z
88296 SPENGLER screws	4.5 x 25 to 4.5 x 65 -T
88296 copper plated SPENGLER screws	4.5 x 25 to 4.5 x 65 -T
89098 Chipboard screws, countersunk head	3.0 x 12 to 6.0 x 160/70 -T
89192 Terraces screws	5 x 40/26 to 5 x 80/48 -T

Under extras we list products that cannot be explicitly sorted into the product groups. They round off our product portfolio.

Available in the following dimensions:

Article	Dimensions
89817 RN-Tight-Bits	T 15 to T 40
89817 RN-Bits	T 50, PH 2

Article	Dimensions
89817 RN-Bit-distance piece	PH 2
89811 RN-Bit set	32 pieces

Wood connectors



We have extended our product range with a variety of wood connectors by GAH. The products have building approval.

Available in the following dimensions:

Article	Dimensions
81500 Anchor nail	4 x 40 to 4 x 60
81501 type A Joist hangers	50 x 105 to 120 x 160
81501 type B Joist hangers	80 x 120 to 100 x 140
81501 type A left Joist hangers	25 x 140
81501 type A right Joist hangers	25 x 140
81502 Flat steel concrete anchor	205 x 40 x 40 to 400 x 40 x 40
81503 steel Flat connector	80 x 40 x 2 to 190 x 90 x 3
81503 stainless steel Flat connector	95 x 35 x 2 to 133 x 55 x 2
81504 HE-anchor	40 x 160 x 30 to 55 x 180 x 30
81505 KR-angle connector	95 x 85 x 65 to 285 x 85 x 65
81506 Perforated plate	140 x 100 x 2 to 400 x 100 x 2
81507 steel Perforated plate angle	40 x 40 x 60 to 100 x 200 x 100
81507 stainless steel Perforated plate angle	60 x 60 x 40
81508 type 28/15 Profile anchor	34 x 160 to 34 x 180

Article	Dimensions
81508 type 38/17 Profile anchor	34 x 160 to 34 x 180
81509 type C1 Disk anchor	17 x 48 to 21 x 62
81509 type C2 Disk anchor	12 x 48 to 16 x 75
81510 steel SL angle connector with bead	70 x 70 x 55 to 150 x 150 x 65
81510 stainless steel SL angle connector with bead	70 x 70 x 55 to 90 x 90 x 65
81511 left Rafter purlin anchors	32 x 32 x 170 to 32 x 32 x 290
81511 right Rafter purlin anchors	32 x 32 x 170 to 32 x 32 x 290
81511 universal Rafter purlin anchors	33 x 33 x 210 to 33 x 33 x 250
81512 steel Angle connector	40 x 40 x 20 to 105 x 105 x 90
81512 stainless steel Angle connector	50 x 50 x 40
81513 Angle connector with bead	70 x 70 x 55 to 90 x 90 x 65
81514 Tie rod	200 x 52 x 40 to 200 x 54 x 40



+49 40 85363-0



mail@reyher.de



www.reyher.de

F. REYHER Nchfg. GmbH & Co. KG

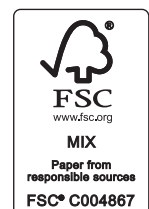
Haferweg 1

22769 Hamburg

Germany

■ Your advantages:

- ✓ Standardized packaging range
- ✓ Consistent colour code system
- ✓ Promotional presentation of goods
- ✓ High delivery performance



49406.231.2021.000
B8/EN2/1/0322